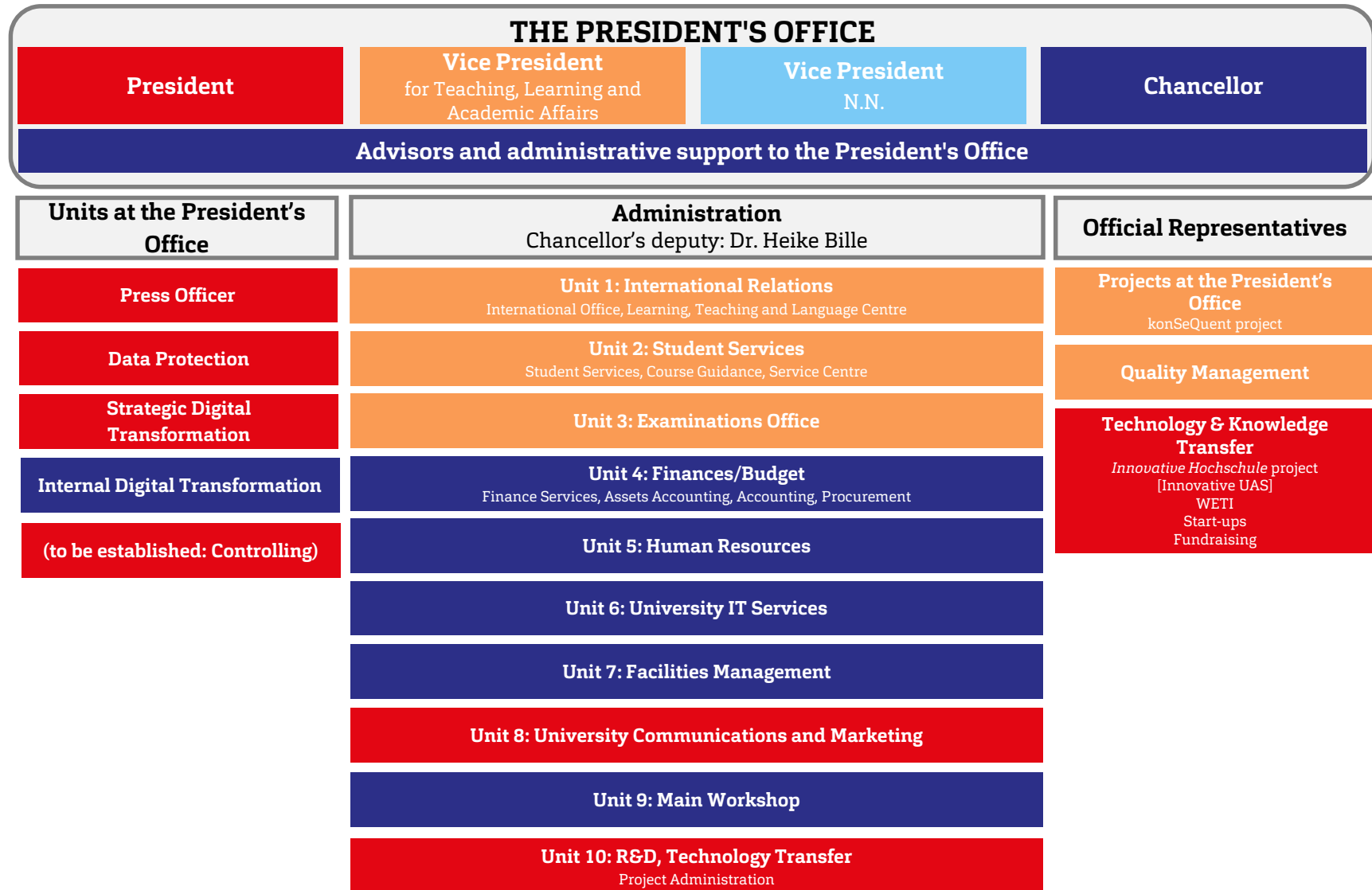


Organisation chart



President

Dr. Christoph Jansen

**Unit at the President's Office
Press Officer**
Torsten Haase

**Unit at the President's Office
Strategic Digital
Transformation**
Julia Döring

**(to be established: Unit at
the President's Office
Controlling**
Head: President)

**Unit at the President's Office
Data Protection**
Head: President

Data Protection Officer
N.N.

Vice President for Teaching, Learning and Academic Affairs

Prof. Dr. Peter John

Official Representative for Quality Management

Dr. rer. pol., Dipl.-Oec. Klaus von Stackelberg

Quality Management

Quality Management
Linda Cornelsen
Birgit Zittlau

Projects

konSeQuent
Nadine Heubeck-Klein
Laura Faiß

Vice President for Teaching, Learning and Academic Affairs

Prof. Dr. Peter John

Unit 1: International Relations

Janntje Böhlke-Itzen (Deputy: Ute Sachau)

International Office

Ute Sachau
Svenja Lehmann

Learning, Teaching and Language Centre

Janntje Böhlke-Itzen

Refugee Students

Antje Fey-Jensen
Brian Andersen
N.N.

Learning and Teaching Centre

Camilla Muschner
Heike Witt
Dr. Hendrik van der Sluis
Aylin Jegust

Language Centre

Victoria Richter
Dr. Margret Reimer

Vice President for Teaching, Learning and Academic Affairs

Prof. Dr. Peter John

Unit 2: Student Services

Sylvia Rußbüldt (Deputy: Lars Struwe)

Info Point

Susanne Kitzig

Service Centre

Service Point

Katja Richter

Student Administration

Lisa Nissen

Student Services

Lone Rühmann
Anja Edwards

Course Guidance

Marc Laatzke
Michaela Arnold

Student Recruitment and Marketing

Maika Worm

Unit 3: Examinations Office

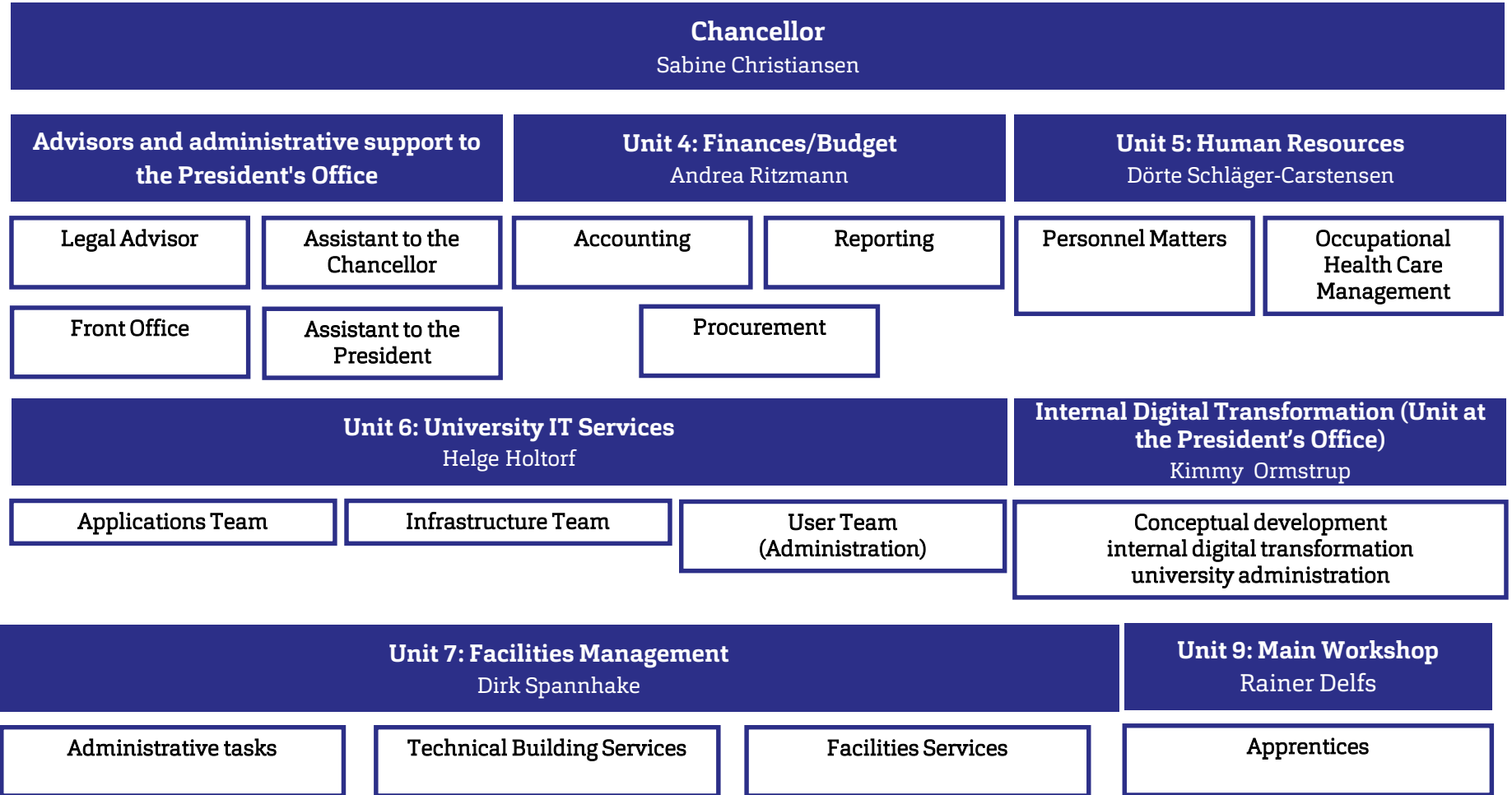
Lars Struwe (Deputy: Sylvia Rußbüldt)

Examinations Office

Inge Cordes
Gudrun Dix
Carolin Jürgensen
Torsten Mielke

Examinations Office, service

Henning Moeskes



Chancellor

Sabine Christiansen

Advisors and administrative support to the President's Office

Legal Advisor
Michel Voß

**Assistant to the
Chancellor,
Administrative support to
Senate**
Iris Mainusch

Assistant to the President
Kirsten Erinc

Front Office
Gesa Matthiesen
Susanne Wrege

Chancellor

Sabine Christiansen

Unit 4: Finances/Budget

Andrea Ritzmann (Deputy: Anja Hansen)

Reporting
Frank Ivers

Accounting
Britta Ivers
Antje Knudsen
Birthe Frey
Anja Hansen

Procurement
Michael Eggert
Andrea Jaspersen
Ute Severin

Unit 5: Human Resources

Dörte Schläger-Carstensen (Deputy: Sabine Uhl)

HR Administration
Eike Carstensen
Tanja Jensen
Sabine Uhl
Nadine Trautmann

**Occupational Health Care
Management**
Stefanie Wisser

**Personnel costs projection, staff
planning, travel costs**
Petra Vogt

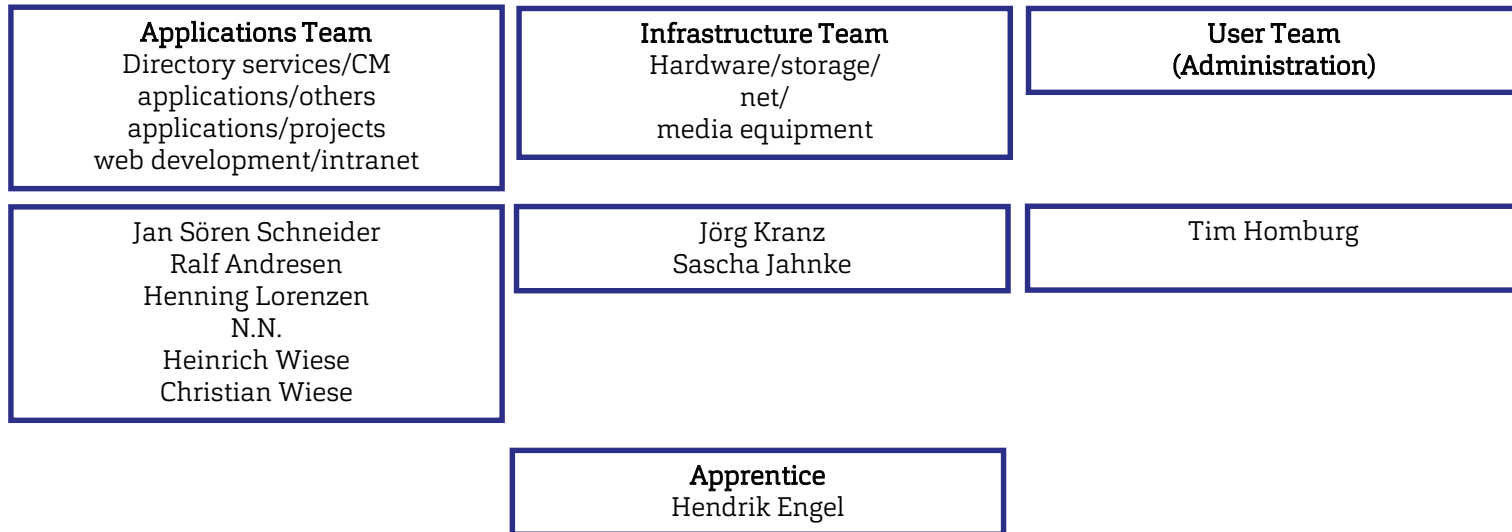
Apprentices
Mara Peters
Faranak Taali
Jule Weiss

Chancellor

Sabine Christiansen

Unit 6: University IT Services

Helge Holtorf



Chancellor

Sabine Christiansen

Unit 7: Facilities Management

Dirk Spannhake (Deputy: Uwe Carstensen)

Administrative tasks	Technical Building Services	Facilities Services
Construction matters Uwe Carstensen	Technical building services – General matters Matthias Stauch	Achim Christiansen Andreas Suckow Olaf Davids
Implementation of construction measures Holger Edelhoff	Technical building services – telephone system Thorsten Iffert	
Fire Safety and Occupational Safety Matthias Berndsen	Technical building services – electrical engineering Systems, electrical systems and fittings Dirk Albert	
General administrative tasks Mona Braas		
Finances-related administrative tasks Sven Misch		

President

Dr. Christoph Jansen

Unit 8: University Communications and Marketing

N.N.

**Media Relations and Internal
Communications**

Kristof Gatermann

Design, Marketing Material

Bärbel Ballaschke

Translations, Website & Social Media

Anja Lehmann

University and Student Events, Alumni

Marcel Dinslage

Chancellor

Sabine Christiansen

Unit 9: Main Workshop

Rainer Delfs

Andreas Brech

Apprentices

Konstantin Baxter

Bennet Fäscher

Ezattullah Faezi

Philipp Christian Johannsen

President

Dr. Christoph Jansen

Official Representative for Technology & Knowledge Transfer

Dr. Heike Bille

Technology & Knowledge Transfer

Innovative Hochschule project

[Innovative UAS]

WETI

Start-ups

Fundraising

Unit 10: R&D, Technology Transfer

Dr. Heike Bille

**Project Application
Management**
Corinna Steffner

Project Administration
Maren Petersen
Markus Schroeder
Leo Eriksen

**Project management
"Innovative FUAS"**
Ilja Schöpke

**Coordinator for regional
networking and
management GrinSH**
Franziska Kruse